

Labour-Intensive Construction of L1756 under the EPWP Programme

OVERVIEW

This project was selected by the community through the local Rural Roads Transport Forum (RRTF) to provide an all-weather road for taxis and vehicles to reach Emzamweni High School and Mzimba Primary School in comfort. As a direct result, there was improved access for 53 homesteads as well.

Local Road 1756 takes off from Main Road P7-2, approximately 10 km beyond Edendale outside Pietermaritzburg. It serves a junior and high school with 1 568 pupils and teachers, and provides two accesses for local communities living below the road. A rough track, previously impassable in places during rains, meant that children would arrive at school with muddy shoes and clothes, and teachers would have to leave their vehicles on the main road.

Under the Expanded Public Works Programme (EPWP), this 0.6 km long road provided an excellent opportunity for:

- Providing job opportunities by sourcing workers from the local community
- Providing an opportunity for four previously inexperienced local emerging contractors to gain managerial and contracting skills
- Providing financial rewards and practical training in a number of sustainable activities
- The Department of Transport to use the experience as a basis for future larger-scale labour-intensive road construction projects.

TRAINING PROVIDED UNDER THE EPWP

Contractors were taught how to begin work on the road under the guidance of the consultant and client. Site training sessions were held at the start of each

WINNER Community-based Projects Category

KEY PLAYERS

Client

KwaZulu-Natal Department of Transport

Professional team

Naidu Consulting (Pty) Ltd

Main contractors

Super T Trading, Fuze Construction, Minathou Trading, L Shezi Trading

Sub-contractor

Caspeforce (Pty) Ltd

contract, where working to tasks was explained in detail. During construction, the task lengths were set out by the contractors and the consultant's site representative on a daily basis. Training was also provided in the build-up of the task rates, quality control, insurances, payment certificates and payment of the workers. This enabled the contractors to understand the requirements of running a business. The following training was provided:

The new L1756 – a road built by the community

■ Administrative:

- How to open a bank account, purchase insurances, and other tasks associated with starting up a business
- Calculating quantities and tasks, and drawing up payment certificates
- Calculating wage packages.

■ Construction:

- How to preserve topsoil
- How to set out horizontal and vertical alignment and curves
- How to balance cut and fill for slotting and infilling
- How to effectively compact using hand stampers and a pedestrian roller
- Shuttering, concreting and screeding
- How to block-pave and cut blocks for filling gaps

Once the selected workers had been allocated to the various contractors, safe working, disciplinary procedures, the

correct use of tools and personal hygiene were explained and demonstrated.

The contractors were also encouraged to move their staff from one activity to another, in order to provide them with as much experience as possible.

Achievement certificates were presented to the workers, and completion certificates to the contractors. As a direct result of this, some of the workforce has found employment at a local housing project.

The Grade 12 class at the high school was also taken to the road to observe its construction in progress, and it is hoped that this will encourage some of them to follow a technical career after school.

WORKS UNDERTAKEN

In order to provide as many local opportunities as possible, the project was divided into four contracts. All four

contracts were let at Grade 1 level, thus allowing entry to contractors with limited finance or limited previous experience. Establishment payments were made to enable them to purchase small tools and to pay their first fortnightly wages.

Clearing, grubbing and landscaping

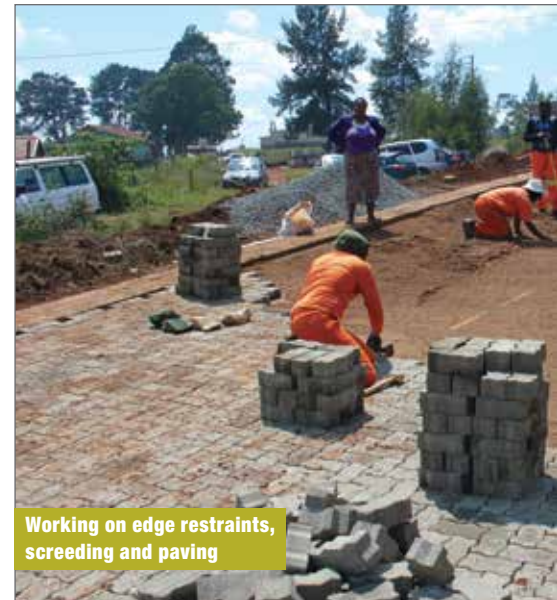
At the start of the construction, topsoil and vegetation were cleared from the working area. After the completion of the road, the preserved topsoil was spread again and the general site area cleaned up.

Bulk earthworks

Centre-line pegs were placed along the straights using ranging rods. The tangent method was used for the curves and bell-mouths.

The slotting method, using a tape, poles and fish-lines, was used for the

The road before community involvement



Working on edge restraints, screeding and paving

Labourers working on slotting

